

Introduction

The Validoss Sampling Kit offers a simple and clear method for individually sampling all channels of the most common flexible endoscopes from Olympus®, Fujifilm®, and Pentax®.

Always follow your own prescribed protocol, this sheet serves only as advice. The latest version of these instructions for use can be found at: validoss.nl/Sampling-Kit-IFU/

Preparation

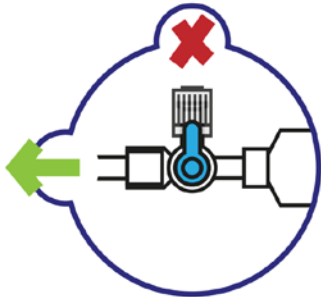
- Items required per endoscope:
 - Disinfected work surface/sterile cloth/inside of opened Validoss Sampling Kit packaging
 - Endoscope to be sampled (in transport container)
 - Validoss Sampling Kit
 - Bottle or bag of rinsing fluid sterile water/NaCl
 - Sample collection jars (one per channel)
 - Swab (if endoscope with forceps elevator)
 - Labels/forms per sample
 - (Sterile) gloves
- Prepare the working field, work aseptically.
- Open the Validoss Sampling Kit.
- Connect all channels of the Sampling Kit to the endoscope. (see Table 1)
- Connect the Sampling Kit to a bottle or bag of rinsing fluid sterile water/NaCl.
- Place the two valve-caps supplied in the Sampling Kit control housing: blue in air/water and red in suction. (for endoscopes with a balloon channel: use the suction valve of the endoscope)
- Place the distal end in such a way that it is free and hangs down so that there is enough space to collect a sample, we recommend hanging the distal end over the edge of the transport container.

Sampling with swab

- Swab forceps elevator (if equipped): Check that the forceps is at a 45° angle. Moisten the forceps with NaCl and take sample from both the front and back of the forceps. Then place the swab in the sample tube.

Sampling channels

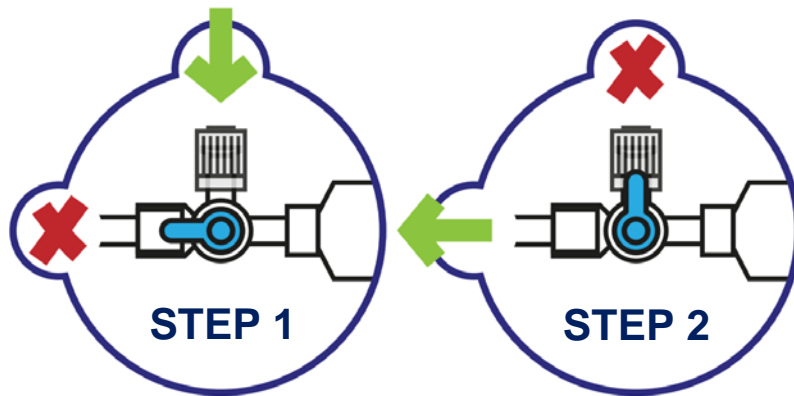
- Set the blue tap at the syringe as follows:



- Set the white tap as follows:



- Fill the syringe with the rinsing liquid.
- Point the white tap towards the desired channel, indicated by a coloured circle. (Filling the syringe when the white tap is between two coloured numbers, emptying the syringe when the white tap is on a coloured number.)
- Take a sample jar and hold it under the distal end.
- Press the syringe in a dosed manner until at least 20mL has been collected. (note: to prevent too high pressure in the air and water channels (nr 1 to 3) it is important to not put too much pressure on the syringe, the blue valve will pop out when there is too much pressure on these channels to prevent damage to the endoscope)
- To fully rinse through the solution, the channel can be flushed with air: turn the blue tap as in step 1 in the image below and fill the syringe with air.



- Turn the blue tap back as in step 2. Empty the syringe into the channel until the desired amount has been collected in the sample jar.
- Repeat the steps for 'Sampling channels' for all channels to be sampled; When the white tap is pointed between two colored numbers, the flushing fluid can be sucked up and when the white tap is pointed towards a colored number, the flushing fluid is sprayed to that channel.
 - Make sure that any excess rinsing fluid from the tip of the endoscope is lightly tapped off between each sample collection.
 - Always hold the sample jar under the tip of the endoscope. Make sure that the tip does not touch the inside of the sample jar.
 - Do not put too much pressure on the channels when flushing: especially at the air and water channels.
 - Take care of the registration and documentation for each sample jar.

Special Notes

Multiple biopsy channels

The biopsy connection is located at number 5 of the Sampling Kit and is equipped with a one-way valve. After taking a sample from the first biopsy channel, you can disconnect the biopsy connector and connect it to the second biopsy port.

Sampling in hanging/vertical position

To sample an endoscope in a hanging/vertical position with the Sampling Kit, the biopsy connection at number 5 must be disconnected from the Sampling Kit and placed on the biopsy port. Sample channels 1 to 4 according to the regular instructions. When you get to number 5 (biopsy channel), disconnect the syringe and connect it to the biopsy connector, take the sample. Finally, disconnect the syringe from the biopsy connector and connect to the Sampling Kit, then take the sample from the suction channel at number 6.

Elevator channel

The elevator channel can be sampled with the connector on number 4 of the Sampling Kit, which is also used for the waterjet channel and features a one-way valve. Sample the elevator channel at number 4. **(Note: make sure the forceps are at a 45 degree angle and don't forget to take a swab as described under 'swab collection')**

Balloon channel

The balloon channel can be sampled with the connector on number 6 of the Sampling Kit, which is also used for the suction channel. Sample the balloon channel before sampling the suction channel. Sample the balloon channel at number 6 while pressing the balloon valve. **(Note: Do not use the provided cap in the Validoss Sampling Kit to seal the suction channel; use the suction valve belonging to the endoscope and ensure it is disinfected or sterilized.)**

Fujifilm 500/600 series

For use with the Fujifilm 500/600 series with a biopsy channel, the biopsy adapter must be removed from the connection on number 5. After removal, use the Luer Lock connection to connect the Sampling Kit to the biopsy channel.

Pentax

Note that the second port of the stopcock manifold on the Sampling Kit is unused, as Pentax endoscopes only have one air intake.

Channels by type of endoscope

Table 1:

number	1	2	3	4	5	6
Designation Validoss Sampling Kit						
Colonoscope, gastroscope, bronchoscope	Air channel 1	Air channel 2	Water channel	Waterjet channel	Biopsy channel	Suction channel
Duodenoscope				Elevator channel		
Linear Ultrasound Endoscope, Linear Echobronchoscope				Elevator channel		Balloon Channel
Radial Ultrasound Endoscope, Radial Echobronchoscope, Double Balloon Enteroscope						Balloon Channel

Procedure deviation

This manual describes a basic protocol for the use of the Validoss Sampling Kit in which each channel is sampled individually. This procedure can be deviated from or supplemented. Below are some suggested examples.

Flush-brush-flush

In a flush-brush-flush sampling method, the suction channel is first flushed and collected in a sampling jar, then a swab is pushed through the channel (ask Validoss for a suitable swab) and also collected in the same sampling jar. Finally, the suction channel is flushed again, which is again collected in the sampling jar.

Extra swab valves and distal end

Swab the Air/Water valve, Suction valve, and distal end separately.

Advice

The employees of Validoss are always ready to answer questions and give advice on the specific requirements and wishes of the hospital for a suitable sampling procedure.

Products

Use the following article numbers for the Validoss Sampling Kit of the desired type of endoscope.

Type of endoscope	Article number
Olympus®	40118
Fujifilm®	40117
Pentax®	40116

Contact

VALIDOSS B.V.	www.validoss.nl
Minervum 7166B	info@validoss.nl
4817 ZN Breda, NL	+31 (0)76 20 90 931